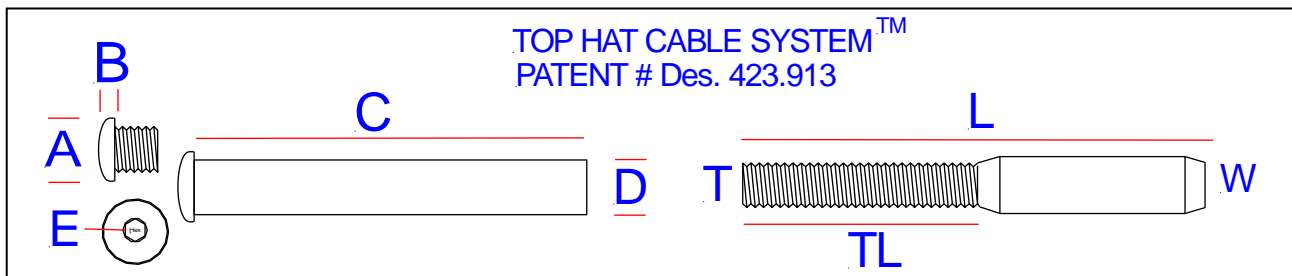


TOP HAT CABLE SYSTEM

PATENT # Des 423.913



Threads are completely hidden from view.



Available in 1/8" - 3/16" - 1/4" - 3/8" - 1/2" Cable

A	B	C	D	E	Part #	TL	T	L	Wire
0.535	0.200	2.250	0.3650	3/16	PCTH.04.6M.100CV	1.000	6MM	2.250	1/8
0.535	0.200	3.250	0.3650	3/16	PCTH.04.6M.150CV	1.500	6MM	2.750	1/8
0.535	0.200	4.250	0.3650	3/16	PCTH.04.6M.200CV	2.000	6MM	3.230	1/8
0.535	0.200	2.250	0.3650	3/16	PCTH.06.6M.100CV	1.000	6MM	2.500	3/16
0.535	0.200	3.250	0.3650	3/16	PCTH.06.6M.150CV	1.500	6MM	3.000	3/16
0.535	0.200	4.250	0.3650	3/16	PCTH.06.6M.200CV	2.000	6MM	3.500	3/16
0.640	0.250	2.900	0.4800	7/32	PCTH.08.10.125CV	1.250	0.312	3.000	1/4
0.640	0.250	3.450	0.4800	7/32	PCTH-08.10.150CV	1.500	0.312	3.250	1/4
0.640	0.250	4.450	0.4800	7/32	PCTH.08,10.200CV	2.000	0.312	3.626	1/4
0.875	0.312	4.375	0.6875	5/16	PCTH.12.12.200CV	2.000	0.375	4.250	3/8
1.250	0.450	5.400	0.8125	1/2	PCTH.16.16.250CV	2.500	0.500	5.500	1/2

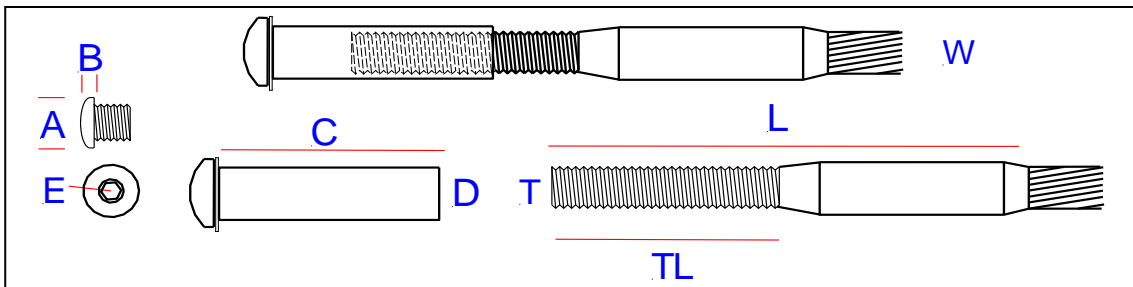
TAKE UP TERMINAL

Thread is exposed when installed

Available with button & flat head screw ends



Ideal for large & wood post



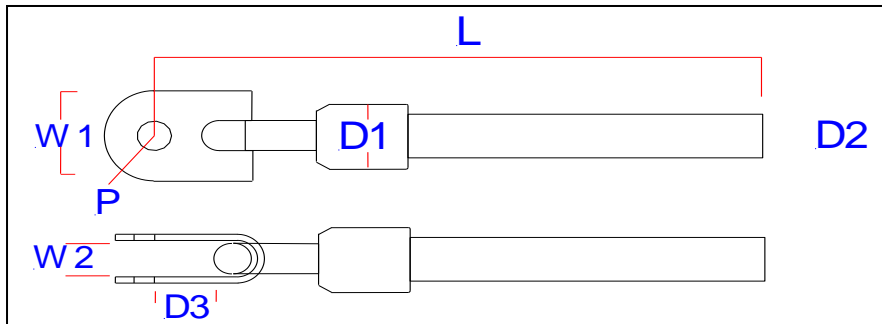
A	B	C	D	E		TL	T	L	Wire
0.530	0.200	1.875	0.365	0.188	PCTU.04.6M.150CV	1.500	6MM	2.750	1/8
0.530	0.200	1.875	0.365	0.188	PCTU.06.6M.150CV	1.500	6MM	3.000	3/16
0.640	0.250	2.000	0.480	0.219	PCTU.08.10.150CV	1.500	5/16NC	3.250	1/4

TOGGLE TOP HAT & DECK TOGGLE TOP HAT



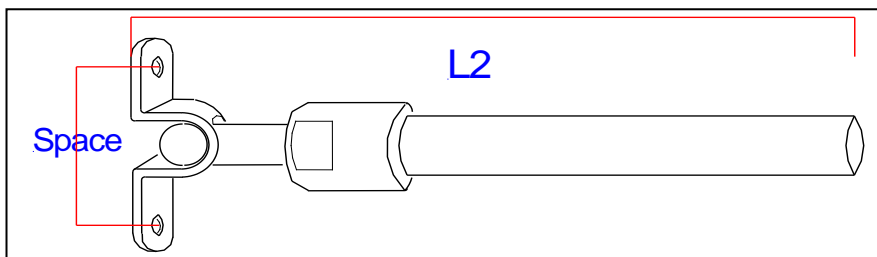
Toggle Top Hat

PCTTH.04/06



Available in 1/8" and 3/16"

Space	W1	W2	P / H	D1	D2	D3	L	L2
1.312	0.625	0.300	0.250	0.500	0.375	0.550	5.500	4.730



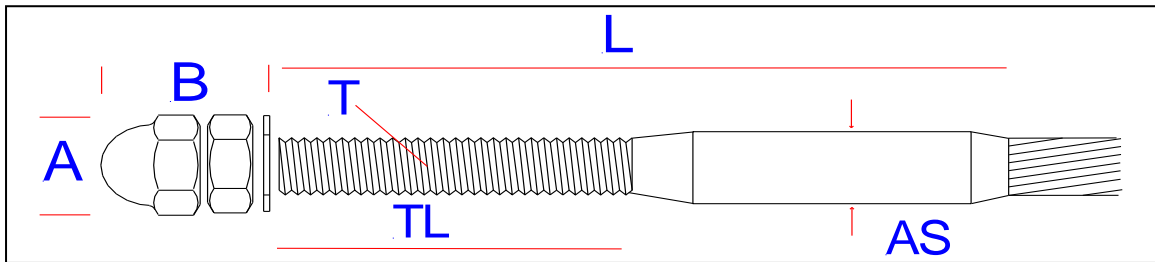
Deck Toggle Top Hat

PCDTTH.04/06

SWAGE STUDS



INCLUDES HEX & CAP NUTS



A	B	AS	Part #	TL	T	L	WIRE
0.440	0.750	0.250	PCSS.04.6M.150	1.50	6MM	2.750	1/8
0.440	0.750	0.250	PCSS.04.6M.200	2.00	6MM	3.250	1/8
0.440	0.750	0.250	PCSS.06.6M.150	1.50	6MM	3.000	3/16
0.440	0.750	0.250	PCSS.06.6M.200	2.00	6MM	3.500	3/16
0.625	0.890	0.375	PCSS.08.10.150	1.50	5/16NC	3.250	1/4
0.625	0.890	0.375	PCSS.08.10.200	2.00	5/16NC	3.750	1/4
0.700	1.000	0.563	PCSS.12.12.200	2.00	3/8NC	4.375	3/8
0.840	1.2000	0.866	PCSS.16.16.250	2.50	1/2NF	5.500	1/2

Top Hat. Hole sizing for cable & fittings.
Drill holes to suit the type of material and finish to be applied.

	Bare Metal		Galv--Paint--Coated		Wood	
	Mid Post,	End Post	Mid post,	End Post	Mid post,	End Post
1/8--3/16 Top Hat	17/64	3/8	5/16	7/16	9/32	3/8
1/4 Top Hat	7/16	1/2	1/2	9/16	7/16	1/2
3/8 Top Hat	9/16	11/16	5/8	3/4	9/16	11/16
1/2 Top Hat	13/16	3/4	15/16	7/8	13/16	3/4

Take Up. Hole sizing for cable & fittings.
Drill holes to suit the type of material and finish to be applied.

	Bare Metal		Galv--Paint--Coated		Wood	
	Mid Post,	End Post	Mid post,	End Post	Mid post,	End Post
1/8--3/16 Take Up	17/64	3/8	5/16	7/16	9/32	3/8
1/4 Take Up	7/16	1/2	1/2	9/16	7/16	1/2